

INDIGO STAR I

38m Star & Moschini



FOR CHARTER - 2020

INDIGO STAR I

38m Star & Moschini



Built 1995, refit 2018

INDIGO STAR I

38m Star & Moschini



10 guests, 5 staterooms, 7 crew

INDIGO STAR I

38m Star & Moschini



Comfortable and spacious deck seating areas

INDIGO STAR I

38m Star & Moschini



Deck Dining

INDIGO STAR I

38m Star & Moschini



Contemporary & sophisticated living areas

INDIGO STAR I

38m Star & Moschini



Contemporary & sophisticated living areas

INDIGO STAR I

38m Star & Moschini



Contemporary & sophisticated living areas

INDIGO STAR I

38m Star & Moschini



Contemporary & sophisticated living areas

INDIGO STAR I

38m Star & Moschini



Contemporary & sophisticated living areas

INDIGO STAR I

38m Star & Moschini



Open plan main salon with dining room

INDIGO STAR I

38m Star & Moschini



Dining Room

INDIGO STAR I

38m Star & Moschini



Master Stateroom

INDIGO STAR I

38m Star & Moschini



Master Office

INDIGO STAR I

38m Star & Moschini



Master Bathroom

INDIGO STAR I

38m Star & Moschini



Double Stateroom

INDIGO STAR I

38m Star & Moschini



Double Stateroom

INDIGO STAR I

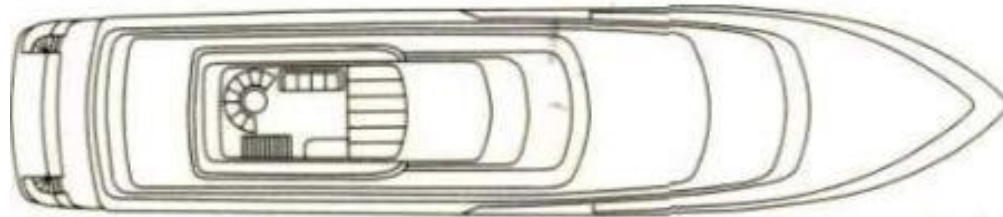
38m Star & Moschini



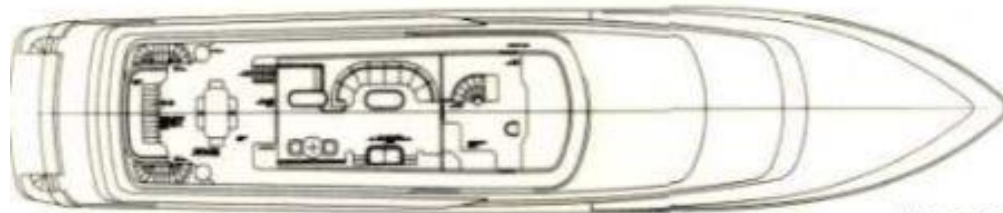
Twin Stateroom

INDIGO STAR I

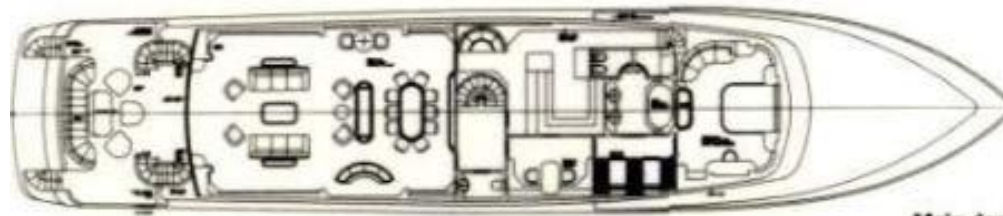
38m Star & Moschini



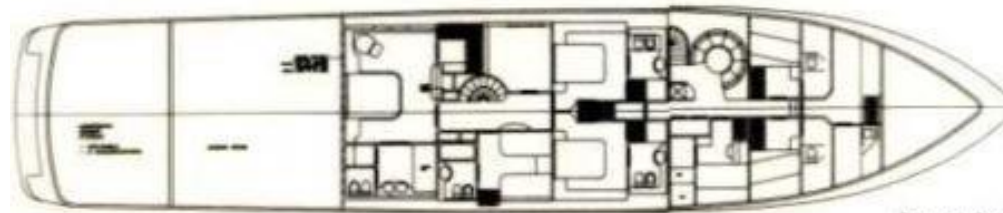
Sun deck



Upper deck



Main deck



Lower deck

Deck Plans

INDIGO STAR I

38m Siar & Moschini



Captain plus 6 crew

10 guests in 4 double cabins & 1 twin cabin

Weekly Charter Rates – MYBA Terms

€ 88,000/week – High Season

€ 78,000/week – Low Season

Length: 38.00m (124' 8")

Beam: 7.70m (25' 3")

Draft: 2.70m (8' 10")

Year built: 1995 (refit 2018)

Builder: Siar & Moschini

Interior Designer: Siar & Moschini

Naval architect: Siar & Moschini

Hull Construction: GRP

Hull Configuration: Semi displacement

Consumption: 600 Litres /Hr

Cruising Speed: 14 knots

Flag: Maltese



Engines: 2 x MTU, 2.285 HP

Generators: 2 x Northern Lights 78 KW, 1 x Kohler 25 KW

Stabilizers: 2 x SEAKEEPER 35

Tenders & Toys:

- Zodiac tender YL470DL SHARC RIB white with 100 HP Yamaha
- Jet ski Seadoo rotax 4-TEC with 260 HP
- Fly board with jetski control
- Inflatable water slide
- Combi, children and slalom waterskis
- Wakeboard
- 3 x Seabobs
- 5 x Aqualung diving sets
- 2 x Doughnuts and banana
- Chase Boat Sillinger, length 9.05 m, width 3,05 m, Mercury Verado engines 2 x 250 hp (available on request and at surcharge of EUR 500 per day plus VAT).